



THE SPENDLETON SCOUT



VOLUME 4

THURSDAY, 11 JULY, 1946

NUMBER 28

COMMANDANT VISITS CAMPEN



General A. A. Vandergrift, Com- MCB would center all the Marine

SecNav Protests Use Of Marines For Long Term Occupation Duty

WASHINGTON.—In a letter to the Naval committees of Congress the Secretary of the Navy last month protested the proposed use of Marines for occupation duty overseas in place of Army troops. The Secretary emphasized that personnel of the Marine Corps have the primary mission of providing an amphibious assault force for the Fleet. This force must be held in readiness, the letter stated, to be moved to any part of the world.

Text of the letter sent to Congressional committees follows:

"Section 2 of this bill would request the President to issue orders for the replacement of Army personnel performing military and police duties in occupied foreign territories, by Marine Corps personnel.

"The primary mission of the Marine Corps is to provide the amphibious striking force of the United States Fleet. This force must be held in readiness to be moved to any part of the world where our national security is in danger. Sufficient forces should be ready to move promptly in a compact body to forestall at its

Tracked Vehicle Bn Host To Army Officers

Lieutenant Colonel S. L. Stephans, Commanding Officer of the Tracked Vehicle School Battalion, Boat Basin, was host to high ranking Army officers Monday.

The Army Officers were from various organizations throughout the United States. In the morning they inspected different types of amphibian tanks and tractors the Marine Corps used during their assault operations in the Pacific. That afternoon they watched a demonstration of these vehicles landing on the beaches adjacent to the Boat Basin.

The possibilities of adapting Marine Corps types of landing vehicles and using our method of operation was the purpose of Colonel W. G. Shelton and Colonel W. E. Fennegan's party visiting the amphibian base.

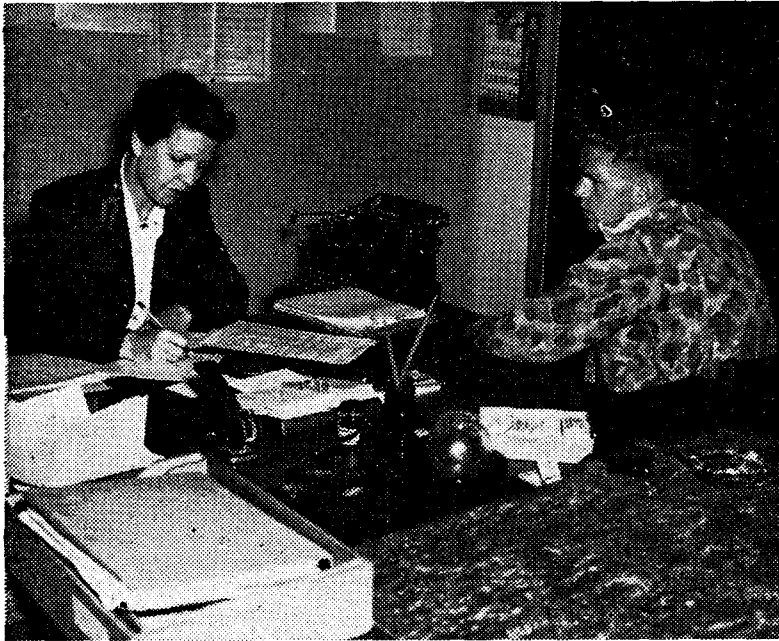
The Army is contemplating a series of indoctrination courses, at the Marine Base, in order that Army Officers may acquaint themselves with the Marine method of ship to shore operations and the use of air support in these operations.

At the present time the Army's amphibious base for the Pacific Area is at Coronado, California.

Marine Sergeant Helps Flyer Howard Hughes

U. S. Marine Sergeant William L. Durkin, who was visiting a nearby home at the time, rushed to the burning plane and dragged test pilot Howard Hughes from the flaming wreckage when the

RED CROSS SERVICES WILL AID DISCHARGEES IN HOME TOWN



Marine Thomas Carl Waden, Jr., of 38 Fourth Street, Navy Card, South Carolina, is assisted by Mrs. Helen Schwanborn, Red Cross Field Assistant, Separation Center, Campen, in filing a claim for pension and other government benefits. Red Cross services to dischargees include consultation and guidance in personal and family problems, financial assistance in the period before the receipt of federal disability or death benefits, referral service and assisting veterans and their dependents in presenting claims.

.....

Dischargees are urged to visit the Red Cross Chapter in their home town and to avail themselves of the services offered to veterans and their dependents. The Red Cross home service worker can give you invaluable assistance and guidance on return to your own community and family. It would be wise for

veterans to become familiar with the GI Bill of Rights and the benefits accruing therefrom. The Red Cross Chapter can refer you to the proper agency and assist in preparing necessary forms and affidavits. Remember, the Red Cross Chapter is always available for counsel and guidance in personal and family problems.

MARINE ENLISTMENTS ARE INCREASING

A grand total of 150,501 men and women remain in the Marine Corps as of 28 June, according to the latest figures released by the Statistics Division. Broken down, this leaves 9,801 male officers, 102 women officers, 138,538 enlisted men, and 2,060 enlisted women. With 4,540 discharges during the week, the total number of discharges since 17 August, 1945, has risen to 382,847.

An increase of more than 150 men over last week's recruiting figures shows that the Marine Corps accepted 2,104 enlistments and reenlistments between June 22 and June 28.

Bound for overseas last week were 2,424 Marines while 3,302

arrived in the United States from foreign duty.

Statistics Division also put out some interesting figures last week concerning enlisted personnel on active duty. All these are as of 28 May, 1946. There were 67,785 regulars, 59,040 reserves, and 28,640 inductees in the Marines on that date. Of the regulars, 41,755 were serving four-year enlistments, 6,268 were on three-year "cruises," and 19,762 had enlisted for two years.

Included in the totals were 552 Negro regulars, 3,334 Negro reserves, and 2,580 Negro inductees.

Marines in college training totaled 623, including 94 four-year regulars, 422 reserves, and 107 inductees.

Approximately 40 retired enlisted Marines are still on active duty at their own request.

NEW BUS SCHEDULE ANNOUNCED FOR CAMPEN AND SAN ONOFRE

A new bus schedule for transportation to and from the San Onofre Beach Club was announced by the Area Special Service Officer this week. The schedules will make the club's facilities available to all hands on Saturdays, Sundays and holidays, without worry about the problem of transportation involved. Holiday schedules will be the same as that for Sundays.

SATURDAY

To San Onofre Beach Recreation Center:

Leave	Leave	Leave	Leave	Leave	Arrive
11-ARC-1	14-R-1	12-R-1	24 Area	Main Gate	San On
1220	1222	1225	1240	1255	1325
1825	1828	1830	1845	1900	1930

From San Onofre Beach Recreation Center:

Leave	Leave	Leave	Leave	Leave	Arrive
S.O.B.R.C.	Main Gate	24 Area	12-R-1	14-R-1	11-ARC-1
1600	1630	1645	1700	1703	1705
2400	0030	0045	0100	0103	0105

SUNDAY

To San Onofre Beach Recreation Center:

Leave	Leave	Leave	Leave	Leave	Arrive
11-ARC-1	14-R-1	12-R-1	24 Area	Main Gate	San On
1220	1222	1225	1240	1255	1325
1825	1828	1830	1845	1900	1930

From San Onofre Beach Recreation Center:

Leave	Leave	Leave	Leave	Leave	Arrive
S.O.B.R.C.	Main Gate	24 Area	12-R-1	14-R-1	11-ARC-1
1600	1630	1645	1700	1703	1705
2210	2240	2253	2310	2313	2315

MEN RETURNING FROM FURLOUGH URGED TO SEE RED CROSS

Servicemen returning to camp from emergency furloughs are asked to visit the Red Cross office, 11 ARC 1, as soon as possible after their return to camp. Mr. J. C. Burnell, Red Cross field director here said this week.

"Our office has either direct or indirect contact with nearly every man before he leaves on an emergency furlough," Mr. Burnell explained, "but all too often we do not get the chance to offer additional help after he returns to camp. An emergency furlough of itself indicates there is some sort of serious distress in the serviceman's family, and therefore, when his furlough expires, and he must return to camp, we know that in many instances he leaves an unsolved problem at home and is still much worried even though he has returned to duty."

Before a man is granted an emergency furlough, his commanding officer usually requests the Red Cross field director to obtain from the Red Cross chapter in the man's home community a report on the circumstances surrounding the emer-

Guamanian Policemen Cited For Jap Hunts

Sixteen members of Guam's Ical Security Patrol Force have been cited by SecNav for meritorious service as members of combat patrol organized to the island of Japanese remain after the main force was cleared out.

The men, all in the Guam Ilice Department, killed 117 ene troops, probably killed 20 m and captured five. They were organized and led by Staff Sergeant Juan U. Aguon, who v awarded the Silver Star Medal. The rest of the group of 15 n received the Bronze Star Medal.

LOVE ULCER FATAL

(SEA)—The "No" to a marriage proposal may bring on stomach ulcers, according to the Cincinnati doctors speaking before the American Psychiatric Association.

Adults develop stomach ulcers because of a thwarted desire to be loved and mothered, Drs. Francis T. Kapp, Milton Rosenbaum and John Romano said.

agency. This confidential report is used by the commanding officer to assist him in deciding whether an emergency furlough is necessary.